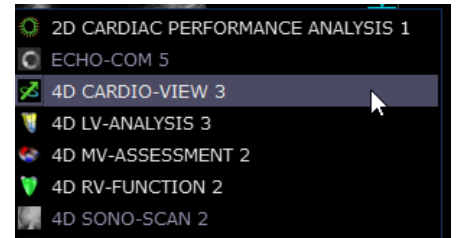




4D CARDIO-VIEW – QUICK GUIDE

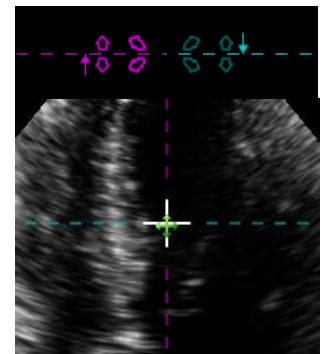
How to start the application

- Start from IMAGE-COM*
- Select a 3D volume
- Press the right mouse button and select 4D CARDIO-VIEW*



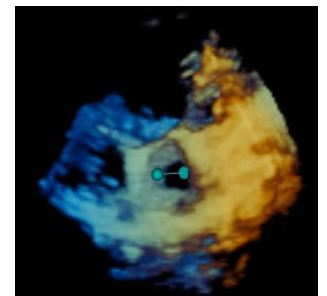
Navigation

- Use the lines of intersection to swipe through the views
- Centerpoint navigation in the middle of lines of intersection

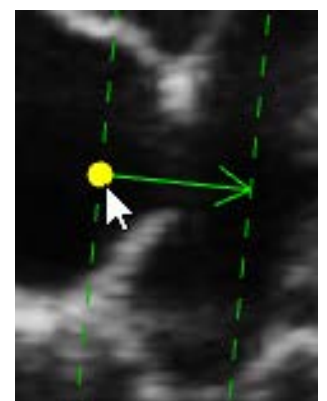


D'art

- Click on the D'art* icon and set two distance points at one of the displayed 2D views to define region of interest and viewing direction for the 3D view
- Rotate the 3D reconstruction via drag and drop



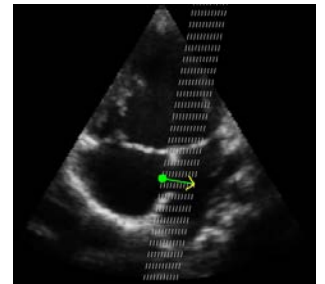
- Easily adjust the region of interest by moving the base or tip of the D'art arrow
- The 3D reconstruction is updated immediately



* Is part of TOMTEC-ARENA. TOMTEC-ARENA, CARDIO-VIEW and D'art are registered trademarks of TOMTEC Imaging Systems GmbH in Germany and/or other countries.

Multi-Slice D'art

- Click on the multi-slice button and set two distance points inside one of the 2D views to define the slicing area
- Easily adjust the region of interest by moving the base or tip of the D'art arrow

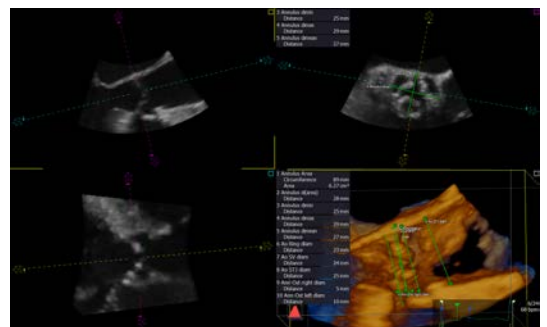


- At the measurement tab different measurements are available
 - Distance
 - Area
 - Curve
 - Angle



TAVR

- In this section TAVR standard measurements can be performed
- Select one measurement and move your mouse into the image region. The measurement can be performed at one of the MPR views or at the 3D reconstruction



Tools

- Select the "Tool" tab for annotations and other options

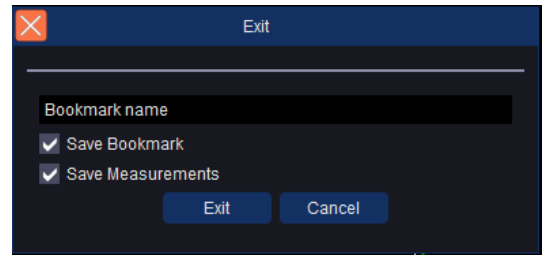


Save and Exit

- Different saving options are available at the toolbar
- Exit the application on the upper right corner



- Put checkmarks at “Save Bookmark” and “Save Measurements”
- Insert a name for your bookmark
- To exit the application confirm with “Exit”



Reopen an analysis

- To reopen an analysis press the right mouse button on the bookmark and select 4D CARDIO-VIEW

