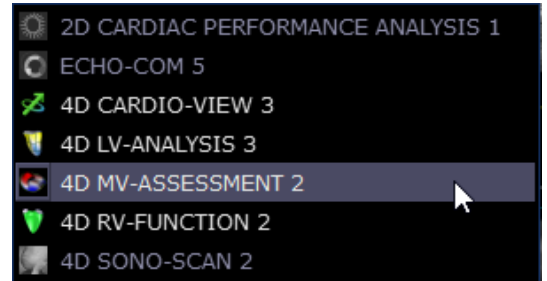




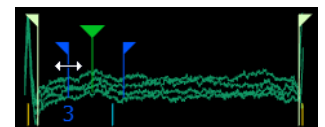
4D MV-ASSESSMENT

How to start the application

- Start from IMAGE-COM*
- Select a 3D volume
- Press the right mouse button and select 4D MV-ASSESSMENT*

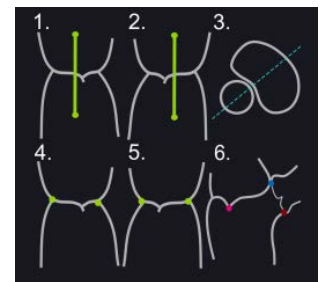


- If necessary drag and drop the blue flags to the position of ED and ES (MV is closed in between)

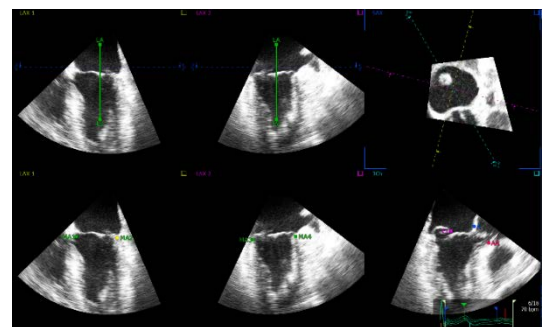


View Adjustment

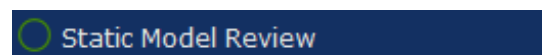
- Use the help guide on the right side (menu panel) to place the landmarks. (Note the sequence of images)



- Reposition the landmarks if necessary by drag and drop
- In each view the mitral valve annulus must be orthogonal to the green lines
- Adjust long axis orientation:
 - Rotate the cyan LOI in the SAX view until it intersects the Aortic Valve. Verify if a 3Ch view is displayed in the lower right
- Set MV annulus landmarks:
 - Position the mitral annulus landmarks (MA1 - MA4) at the mitral annulus
- Set landmark in 3Ch view:
 - Position the anterior landmark (A) at the end of the anterior leaflet. The coaptation point (C) has to be positioned at the leaflet tip. The aortic annulus (AA) can be positioned optionally



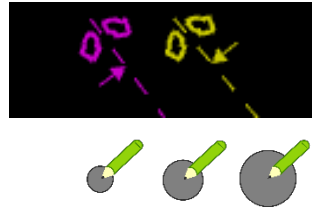
- To continue press "Static Model Review"



* Is part of TOMTEC-ARENA. TOMTEC-ARENA is a registered trademark of TOMTEC Imaging Systems GmbH in Germany and/or other countries.

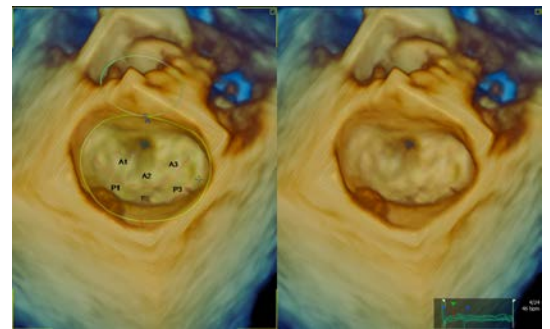
Static Model Review

- The displayed views can be adjusted by moving the colored lines (SAX, Annulus View and Coaptation View).
- Select one "Pen Size"
 - Recommendation: Select a small pen for small corrections



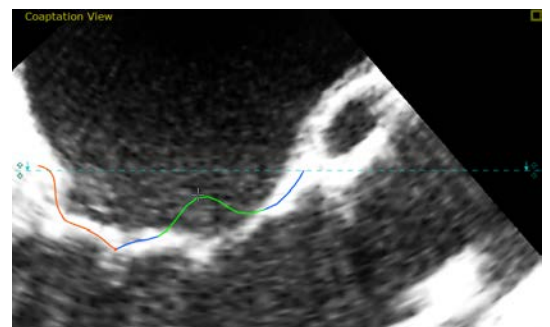
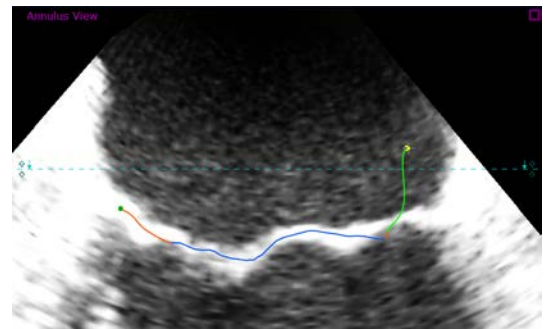
Commissure

- To adjust the positions of the commissures activate the button on the right hand side
- Adjust the commissure points if necessary

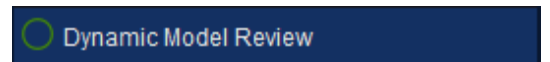


Annulus and leaflets

- At the upper views the proposed contour and annulus can be adjusted by drag and drop if necessary




- Select "Dynamic Model Review" to visualize a systolic dynamic model



Dynamic Model Review

- Adjust the proposed contour of the leaflets in each frame by drag and drop if necessary
- Use the "Next Frame" or "Previous Frame" button at the toolbar to continue to the next frame
- Select "Analysis" to conclude the analysis



 Analysis

Save and Exit

- Different saving options are available at the toolbar
- Exit the application on the upper right corner
- Put checkmarks at "Save Bookmark" and "Save Measurements"
- Insert a name for your bookmark
- To exit the application press "Exit".

