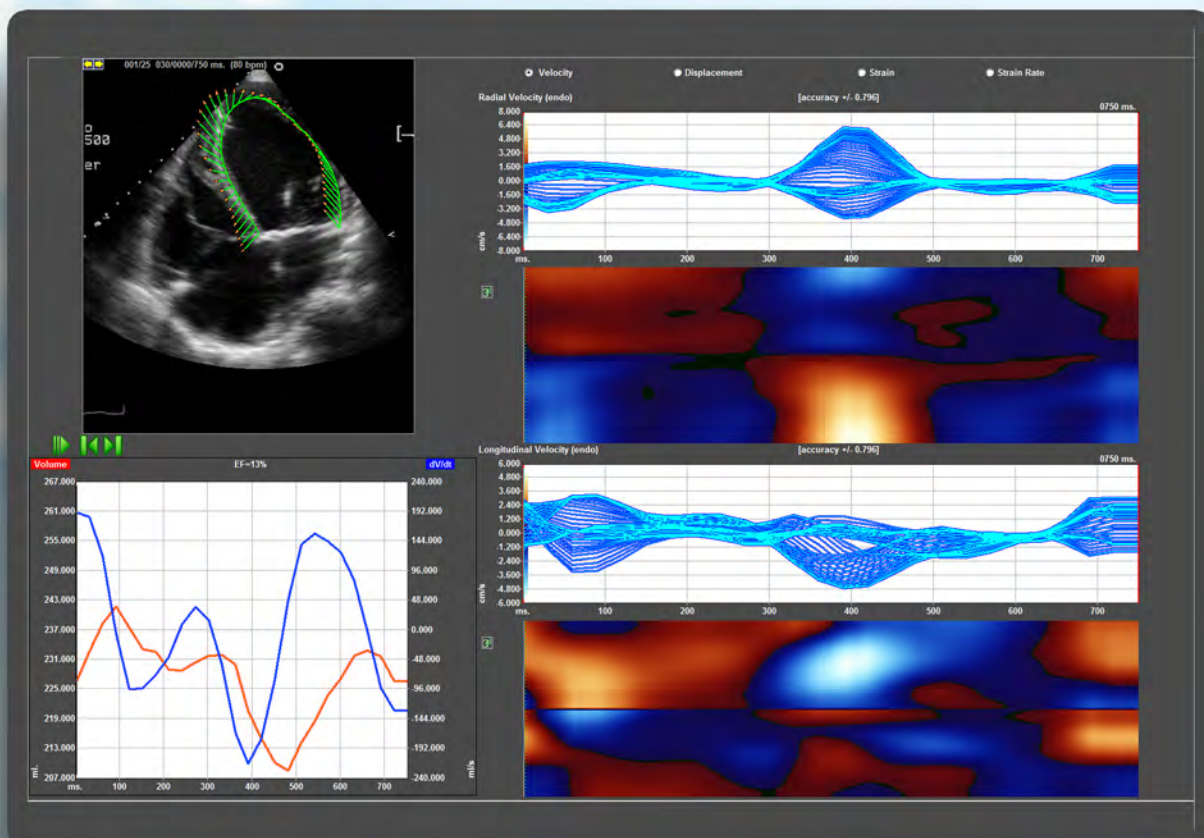


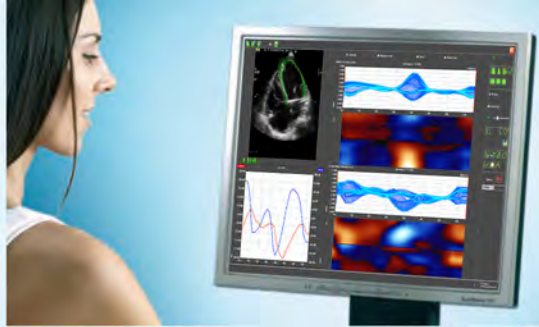
2D CARDIAC PERFORMANCE ANALYSIS[®]



CARDIOLOGY

2D Based Quantification of Myocardial Function





EXPERIENCE MYOCARDIAL FUNCTION

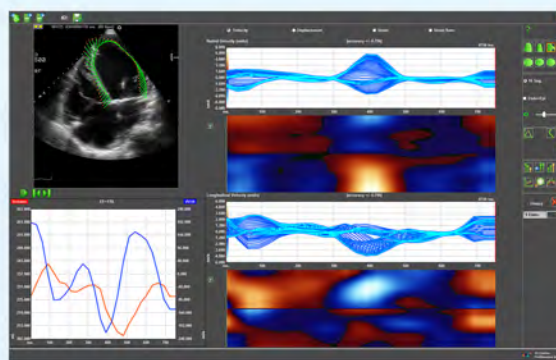
The analysis of the myocardial function has always been one of the most interesting challenges in cardiology. 2D Cardiac Performance Analysis^{®*} improves the diagnostic possibilities for every cardiologist, because a standard 2D sequence is the starting point for this high sophisticated tool. On the basis of innovative speckle tracking algorithms the angle independent analysis of the myocardial performance assists the user doing a better and faster diagnosis and performing a more accurate therapy follow up.

At first glance:

- Clearly arranged display
- Perspicuous result visualization
- Easy to analyze results

One step ahead technology:

- Versatile tracking algorithm
- Angle independent analysis
- Various result illustrations

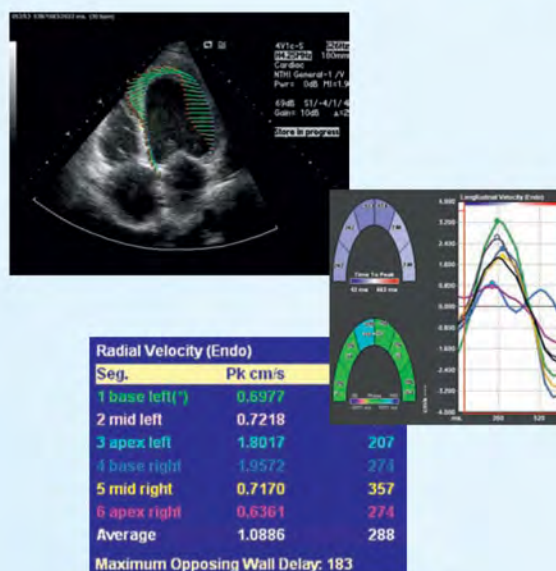


Easy to use:

- User optimized workflow
- Intuitive handling
- Independent from ultrasound system

Diagnostic key features:

- Endo- and Epicard Analysis
- Display of velocity, displacement, strain and strain rate
- Graphs, Parametric display and numeric results
- Time to Peak Analysis
- Analysis of longitudinal, radial and circumferential components



* 2D Cardiac Performance Analysis[®] is only available for sale in specific countries. For availability, please contact your local representative.

TomTec Imaging Systems GmbH
 Edisonstrasse 6
 85716 Unterschleissheim · Germany
 Phone: +49(0)89/32175-500
 www.tomtec.de

TomTec Corporation USA
 525 West Monroe Street
 Suite 2360
 Chicago, IL 60661 - USA
 Toll Free 1-866-735-3740

TOMTEC
 IMAGING SYSTEMS

