

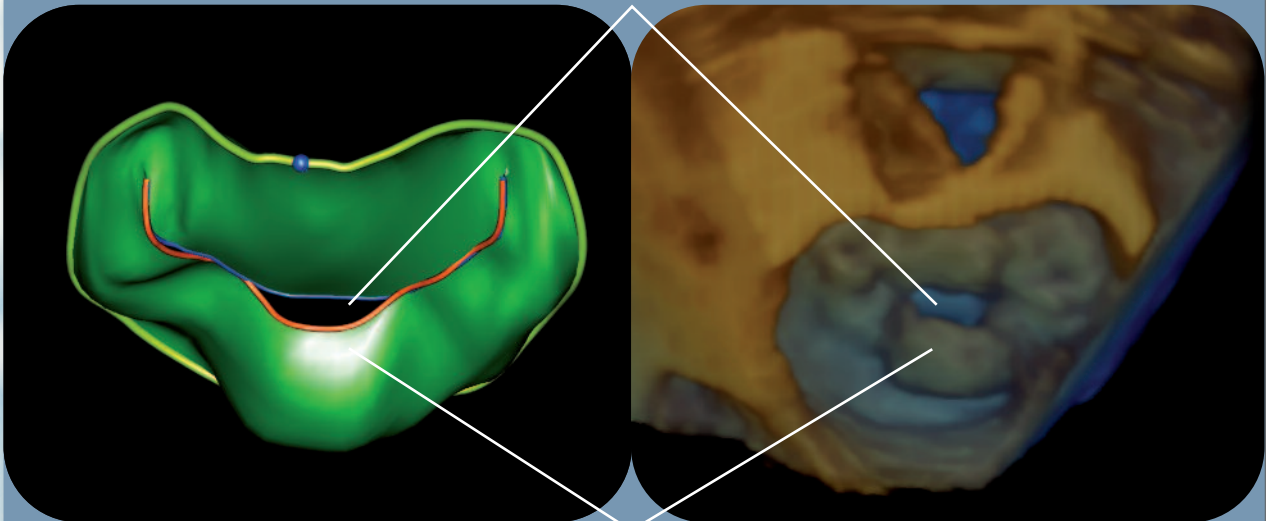
# 4D MV-ASSESSMENT<sup>®</sup>



CARDIOLOGY

Improve your diagnostic confidence  
for mitral valve therapy

Regurgitant orifice



P2 Prolapse

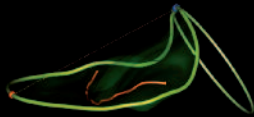
Quantitative decision making in 20 seconds



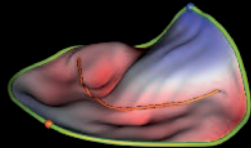
# 4D MV-ASSESSMENT<sup>©</sup>

Improve your diagnostic confidence for mitral valve therapy. Quantitative decision making in 20 seconds

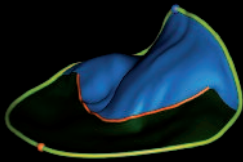
## Visualization of Measurements



AP Diameter and  
AoV Annulus



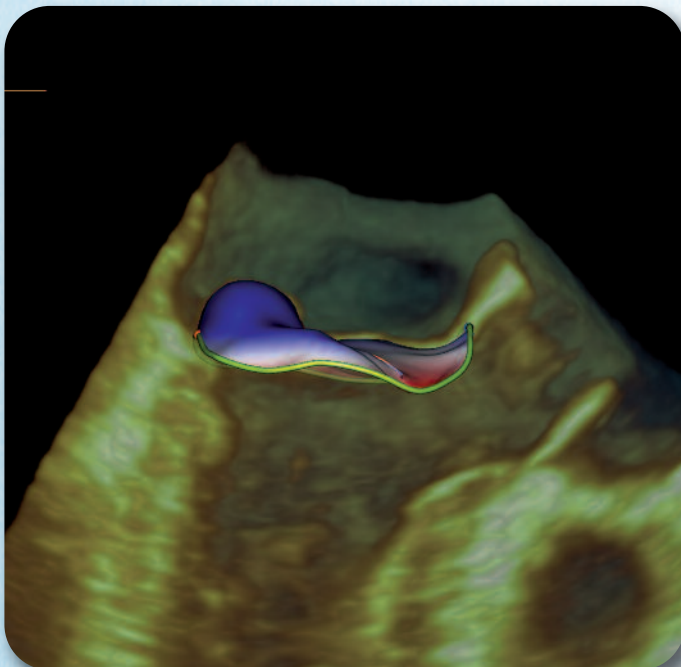
Parametric display  
of topology



Anterior leaflet  
area



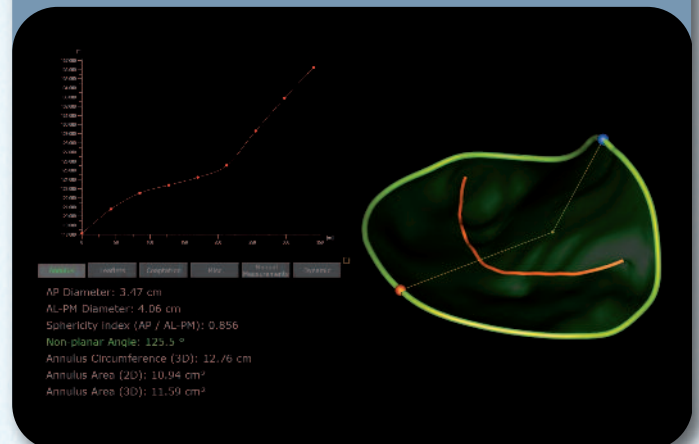
Posterior leaflet  
area



## Clinical Benefits

- Enhanced workflow:
  - *ready for clinical routine*
  - *quantitative parameters in 20 seconds*
- Increased diagnostic confidence:
  - *preoperative functional assessment*
  - *postoperative recovery monitoring*
- Improved interdisciplinary communication

## Dynamic measurements



## Key Features

- Supports 4D TTE and TEE data
- Dynamic visualization and quantification of mitral valve morphology and function
  - *prolapse topology*
  - *regurgitant orifice*
  - *coaptation line*
  - *jet origin*
- Automated feature set
- Comprehensive measurements
- On-screen help

TomTec Imaging Systems GmbH  
Edisonstrasse 6  
85716 Unterschleißheim · Germany  
Phone: +49(0)89/32 175 - 500  
www.tomtec.de

TomTec Corporation USA  
525 West Monroe Street  
Suite 23620  
Chicago, Il. 60661 – USA  
Toll Free 1-866-735-3740

**TOMTEC**  
IMAGING SYSTEMS

