

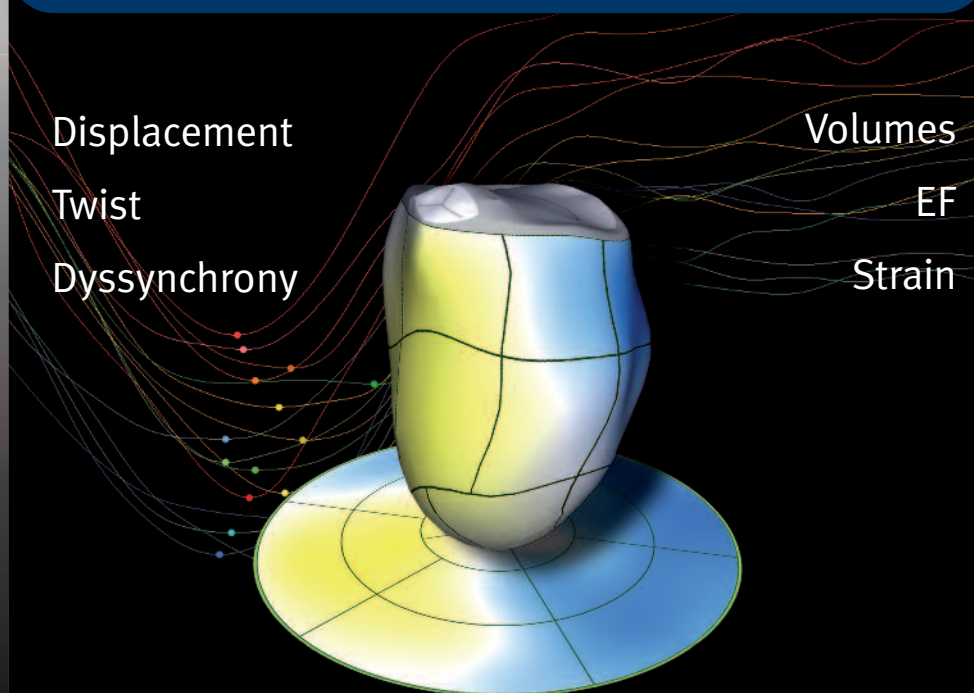
4D LV-ANALYSIS[®]



CARDIOLOGY

3D Speckle Tracking Analysis of the left ventricle

3D Quantification of LV Function and Dyssynchrony



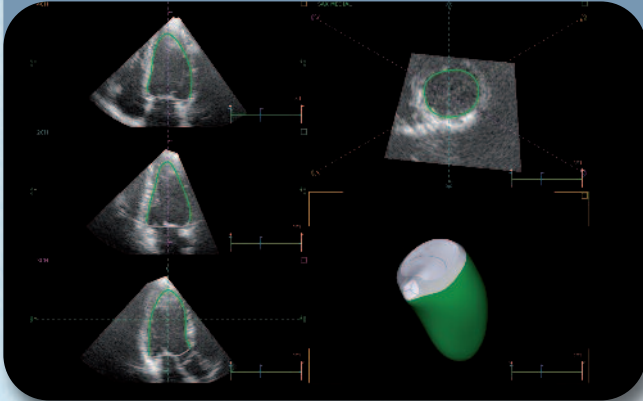
... and all in less than a minute!



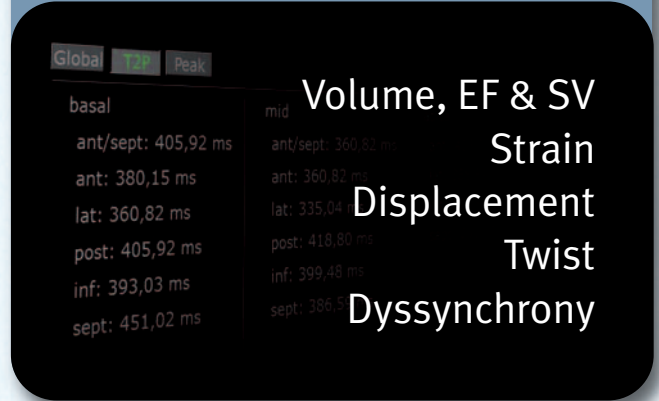
4D LV-ANALYSIS[®]

3D Speckle Tracking Solution for the Analysis of Left Ventricular Function and Dyssynchrony

Automatic Contour Detection



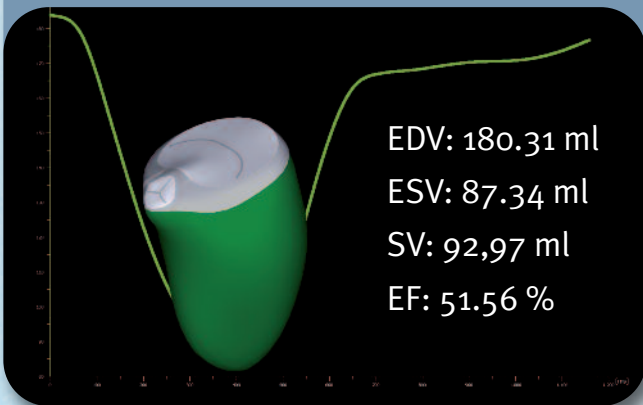
Automatic Measurements



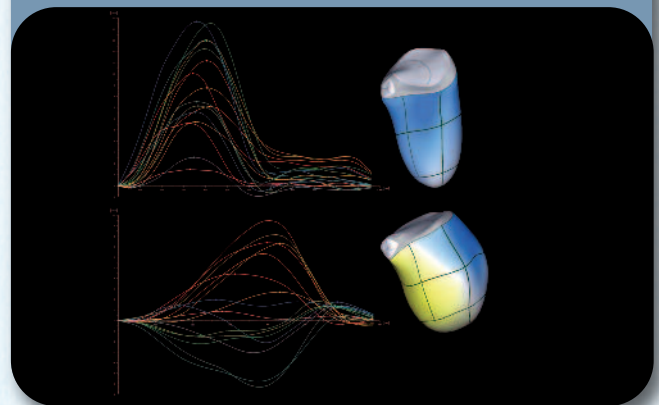
Key features:

- > automatic adjustment of viewing planes
- > no manual contour tracing required
- > 3D speckle tracking algorithm
- > works with all commercially available 3D formats
- > comprehensive measurement package
- > state of the art visualisation methods

Global LV-Parameters



Normal / Dyssynchrony



Clinical benefits:

- > high efficiency through optimized workflow
- > true shape – no geometrical assumptions
- > Dyssynchrony assessment
- > global and regional clinical parameters
- > reliable volumes and EF
- > global longitudinal strain
- > twist

4D LV-Analysis is only available for sale in specific countries.
For availability, please contact your sales representative.

TomTec Imaging Systems GmbH
Edisonstrasse 6
85716 Unterschleissheim · Germany
Phone: +49(0)89/32 175 - 500
www.tomtec.de

TomTec Corporation USA
525 West Monroe Street
Suite 23620
Chicago, Il. 60661 – USA
Toll Free 1-866-735-3740

TOMTEC
IMAGING SYSTEMS

